



Stand with ^{UA}
KYIV

SUPPORT

K Y I V

Each assistance attributed to support the enlisted projects shall be a subject of the separate detailed financial analysis and of the ongoing report with a potential partner





Stand with **KYIV** ua

REHABILITATION AND SOCIAL PROTECTION



REHABILITATION OF THE VICTIMS OF THE WAR

Stand with
KYIV ^{UA}

GOAL

Renewal of the material and technical base of the institution, creating a modern rehabilitation center with 350 beds

DONE

- October 2022 - overhaul of the premises of the 12-story hospital building began
- December 2023 – completion of construction works and land improvement of the territory (4.9 hectares)

The source of funding for construction works – the budget of the Kyiv city

REQUIREMENT

Equipping the hospital premises with modern equipment for rehabilitation





REHABILITATION OF THE VICTIMS OF THE WAR

Stand with
KYIV Ukraine

EQUIPMENT REQUIREMENTS

No	Name	quantity	No	Name	quantity	No	Name	quantity
1	WSC-4 cabin-type physiotherapy rehabilitation cage	3	16	Medical functional bed with height adjustment of the bed type Mirid M08	290	32	Orthoses, bandages, slings (sets)	30
2	A table for the development of hands and fine motor skills of the fingers type TBO (with load)	2	17	Step platform type Springos FA0105	20	33	MedenRG-1 type mechanical rotor for training upper limbs	6
3	Multifunctional complex for rehabilitation of the MediLine TRAC 60E type	2	18	The Swedish wall with CrossFullPro expanders is reinforced	20	34	Apparatus for training the joints of the hand and fingers	5
4	Rehabilitation simulator frame type universal MedGym 105 kg, code: TB103-105	2	19	Rehabilitation belts for securing/moving patients AM-PMediLine type	20	35	Goniometers, dynamometers, pinch meters	10
5	Verticalizer of the EasyStand Glider type PNG 50024 [56988]	2	20	Trainers, panels for occupational therapy type T-03	5	36	Trainer for increasing strength and range of motion in the joints of the limbs, type OSD-102K	5
6	Mobile lifter with an electric drive type OSD-1790V	2	21	Elastic tape harnesses 7-56 kg	50	38	Electromyograph type Neuro-MVP-8	2
7	Balancing platforms of the "Hamispherical" type PBN-1	20	22	Horizontal exercise bikes of the Matrix R30XR type	2	39	EsoGLOVE hand rehabilitation and training system	4
8	Bars for restoring walking skills with obstacles type ALVA AL412	4	23	Robotic complex for locomotor therapy with extended feedback of the Lokomat Pro type	2	40	Electro/mechanotherapeutic device with manual software remote control for continuous, passive development of the knee and hip joint type ARTROMOT S4, ARTROMOT K1, SP3 comfort chip, E2 compact.	8
9	Rehabilitation treadmill type BodyChargerRehab GT8600R	2	24	Combined apparatus for physiotherapy type BTL-5800SLCOMBI	2	41	EsoGLOVE hand rehabilitation and training system	10
10	Dynamic stair-bars of the MediLine DST 8000 dynamic simulator type	2	25	Combined apparatus for physiotherapy type VTL-4623Premium	3	42	Couch for mud treatment with the option of vichy showers type TALASSO VICHI	2
11	Labyrinth trainer for restoring hand motility type TR-1L	5	26	Ultrasound device for use in rehabilitation medicine type BTL-5000 Sono	1	43	Apparatus for assessment and therapy in the rehabilitation of patients with impaired motor functions (including walk analysis) type PABLO® System	2
12	Hand and leg weights of the EasyFit type with a variable weight of 2.5 kg	20	27	Apparatus for light therapy "Bioptron pro 1", "Bioptron 2"	4	44	Multifunctional motorized system with built-in force sensors of the HUBER® 360 EVOLUTION type	4
13	Means for positioning of various shapes and sizes: wedge-shaped pillows, A-pillows, roller, semi-roller and others (possible in sets)	20	28	Verticalizing table with robotic orthopedic device and FES type ERIGO V4 PRO (HOCOMA)	1	45	Mechanotherapeutic apparatus for active and passive rehabilitation of upper and lower limbs SP-1100	7
14	Gymnastic mats type Hop-Sport HS-095FM	10	29	Shower chairs of the OSD Swinger roll-chair type for showers and toilets	40	46	Ceiling lift type GH1	4
15	A wide couch (Bobat table) with height adjustment of the MediLineSR-3E-B type	2	30	Communicative board of the type of magnetic marker board with a set of didactic cards	4			
			31	Chair for toilet type OSD-2110J	15			



Advanced training for specialists in physical culture and sports, taking into account sports rehabilitation for victims of the war

Stand with **KYIV** ^{ua}

GOAL

Training of highly qualified specialists in sports rehabilitation for the victims of the war

REQUIREMENT

Conducting courses, trainings, and professional development seminars for more than 100 physical education and sports professionals



REHABILITATION OF KYIV CITIZENS WITH DISABILITIES



GOAL

Creation of a modern rehabilitation center to provide social and rehabilitation services to Kyiv residents with disabilities

DONE

- 2021 – began the reconstruction work of the building
- October 2023 – completion of construction works and land improvement of the territory (4.9 hectares)

The source of funding for construction works – the budget of the Kyiv city

REQUIREMENT

Equipping the hospital premises with modern equipment for rehabilitation





REHABILITATION OF KYIV CITIZENS WITH DISABILITIES



EQUIPMENT REQUIPMENTS

No	NAME	quantity	No	NAME	quantity	No	NAME	quantity
1	Aquatherapy system FOCUS JUNIOR, 1200 L 1486 x 730 x 1450(h) without display and podium with ramp, N = 400 V, 3 phases, neutral and ground 50/60 Hz 16 A per phase, 240 V single phase 50 Hz 16 A	1	8	Multifunctional rehabilitation chair for lower and upper limbs and muscle exercises ARTI REHAB with accessories AC0700 and 07466 710 x 850/1250 x 125(h)	1	18	Device for active-passive mechanotherapy of upper and lower limbs Sungdo SP-1100, motorized 920 x 550 x 1080(h) Power supply: 220V, 60Hz	1
2	MEDEN Aquameden therapeutic bath for underwater massage, V = 550 l 2350 x 1000 x 960(h) N = 2.4 kW; 230V, 50 Hz	1	9	Verticalizing table SP-2 with horizontal and vertical height adjustment with electric drive 1950 x 850 x 500/900(h) N = ... kW	1	19	Rehabilitation and Health Platform with TheraBand 21915 accessories	1
3	LOKOMAT PRO PEDIATRIC (HOCOMA) Robotic rehabilitation complex for restoring gait 3500 x 2140 x 2460(h) N = 4.6 kW; 220V, 50 Hz	1	10	Treadmill RUN 7410-PC/TJ XL, with handrail, with armrests, with mounting system, with incline, adapted for wheelchair patient 2100 x 1050 x 1500(h) N = 2.2 kW; 220-240V, 50/60Hz, 12A	2	20	Psychomotor set 2 760 x 575 x 920(h)	1
4	Set of mechanotherapeutic equipment for kinesiotherapy "Graviton-1", (complex for suspended kinesiotherapy, rehabilitation-massage table and set of accessories 2500 x 2100 x 2200(h))	1	11	Ceiling lift LUNA Luna with transfer 200 kg (white) 320 x 130 mm, belt length 2200 mm Lead-acid battery 36V Power 100 - 240 V, 0.5A	1	21	ERGO mobile ergonomic workstation 1060 x 680 x 820(h) with a full set of accessories	1
5	Verticalizer orthopedic ACTIVALL CROSS Mediline AV 0003 Cross, size 5 1380 x 900 x 1120(h)	1	12	Interactive sandbox WemaKids fl 132 1120 x 700 x 500/1800(h)	2	22	Sensory room with an interactive system virtual reality NIRVANA	1
6	Wireless system NESS L300 Plus Foot Drop System of functional electrical stimulation (FES) of the muscles of the lower part of the leg	1	13	Robotic rehabilitation system of safe walking VECTOR ELITE for physical rehabilitation of patients with balance disorders	1	23	Furniture (set)	1
7	Interactive board Prestigio MultiBoard 98" G-series (PMB728G988) 2257 x 120 x 1335(h), N = kW	2	14	A robotic complex for the rehabilitation of the lower limbs and restoration of walking skills with a built-in system of synchronized electrical stimulation EXOATLET® I (ExoAtlet) 8 batteries, work for up to 4 hours	1	24	Household and office equipment	1
			15	EXOATLET BAMBINI exoskeleton for the rehabilitation of children with locomotor disorders, designed specifically for the rehabilitation of children with cerebral palsy 8 batteries, work up to 4 hours	1	25	Auxiliary rehabilitation equipment	1
			16	Soft robotic exoskeleton for hand rehabilitation EsoGpLOVE Pro	1	26	Auxiliary means of rehabilitation	1
			17	NESS H200 wireless hand rehabilitation system	1	27	Didactic materials	1
						28	Equipment for labor rehabilitation	1
						29	Decorative elements of the interior	1
						30	Sanitary and hygienic equipment and means for cleaning	1
						31	Medical equipment	1



Stand with ^{ua}
KYIV

MEDICAL CARE



Improvement of medical care for bone marrow transplantation

Stand with ^{USA}
KYIV

GOAL

Optimization of system of medical services provision during transplantation, including bone marrow transplantation

DONE

In 2023, the design and construction of the bone marrow transplantation unit began

Source of funding for construction works – budget of the Kyiv city

REQUIREMENT

Equipping the premises with modern equipment for transplantation





Improvement of medical care for bone marrow transplantation

Stand with 
KYIV

EQUIPMENT REQUIREMENTS

№	Name	quantity
1	Low-temperature freezer, for example FDE50086FV, -86, 682 liters	1
2	Desktop centrifuge with cooling, for example Megafuge 8R, 75007214	1
3	PCR QuantStudio 5 Dx Real-Time PCR System, 96 well, 0.2 ml	1
4	PCR QuantStudio™ 5 Real-Time PCR System, 384-well, 0.02 mL Dx	1
5	Amplifier, for example Veriti Thermal Cycler, 0.2 mL, 96 well Dx	1
6	Genetic analyzer, for example 3500 Dx Genetic Analyzer is an 8-capillary CE-IVD	1

№	Name	quantity
7	Spectrophotometer for example NanoDrop™ One Microvolume UV-Vis Spectrophotometer	1
8	Genomic sequencer such as Ion GeneStudio™ S5 System with system	1
9	A system for the automatic isolation of nucleic acids, for example, KingFisher Duo Prime, 5400110	1
10	Automatic multichannel pipette dispenser, for example LinkSēq VIAFLO ASSIST	1
11	Liquid dosing station, for example QIAgility	1
12	PCR system, for example CFX96 Dx	1



The leather tanning laboratory

Stand with
KYIV ua

GOAL

Arrangement of a laboratory for the production of innovative biomedical preparations based on human stem

DONE

In 2023, the design and construction of a leather growing laboratory began

Source of funding for construction works – budget of the Kyiv city

REQUIREMENT

Equipping the premises with modern equipment for the leather tanning laboratory





Leather tanning laboratory

EQUIPMENT REQUIREMENTS

Nº	Name	quantity
1	Multiplex analyzer for HLA diagnostics LABScan3D	1
2	Class II biological safety box, type A2, for example, Airstream 1200 mm	2
3	A fume hood chemical for the laboratory	4
4	Desktop centrifuge with cooling, for example Megafuge 8R, 75007214, Thermo Fisher Scientific	1
5	Centrifuge, for example Eppendorf 5804	1
6	Dewar vessel Locator 4 Plus	4
7	Dura Locator Junior vessel	2
8	Dewar transport vessel 30 liters	2
9	CO2 incubator, for example BINDER 210	2
10	Thermostatic water bath, for example lauda aqualine all2	1

Nº	Name	quantity
11	Ultracentrifuge, for example Sorvall WX 80+, 75000080, Thermo Scientific	1
12	Microscope, for example Primovert Axiocam 105	1
13	Autoclave for example Priorclave 100L AUTOCLAVE FRONT-LOADING AUTOCLAVES	1
14	Mettler Toledo pH meter	1
15	Кріоциліндр DPL210	1
16	Low temperature freezer for example FDE50086FV, -86, 682 liters	1
17	Apheresis system, for example, Spectra Optia	1
18	Refrigerator centrifuge, for example Rotixa 500RS, Hettich	1
19	Biological safety box, for example HR 1500-IIA2	1
20	Apparatus for extracorporeal photopheresis, for example MacoGenic G2	1



Improvement of medical care for maxillofacial trauma

Stand with
KYIV ^{UA}

GOAL

Equipping the maxillofacial trauma department with modern equipment

DONE

- 2021-2022 – repair work completed

The source of financing – the funds of the institution

REQUIREMENT

Equipping the premises with modern devices





Improvement of medical care for maxillofacial trauma

Stand with ^{UA}
KYIV

EQUIPMENT REQUIREMENTS

Hybrid surgical stand for maxillofacial surgery with a shaver system and a coagulator for:

- Arthroscopy of the temporomandibular joint
- Sialoscopy
- Classical endoscopy of ENT organs

Microscope for microvascular surgery in maxillofacial surgery



SAFE SURGICAL CARE

GOAL

The construction of a new modular building will reduce the risk of the patient becoming infected with hospital-acquired infections

REQUIREMENT

Construction of a modular building and its equipment, where the surgery department will be located, according to modern projects and standards.

The approximate total area of the premises is 1 000 square meters.

The premises will consist of 3 blocks:

- intensive care unit;
- operating unit;
- departments





Stand with
KYIV ua

EDUCATIONAL SPHERE



LAPTOPS FOR TEACHERS

Stand with ^{USA}
KYIV

GOAL

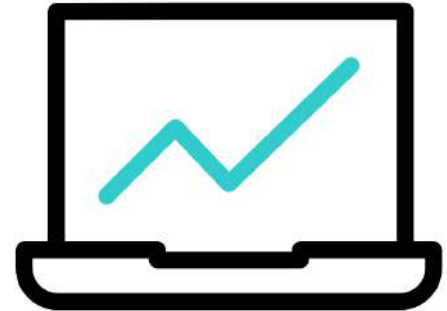
Transferring teachers' work to electronic format

DONE

- 100% of schools are provided with an electronic classroom journal
- 67% of teachers are provided with laptops

REQUIREMENT

Providing teachers with 7000 laptops for electronic and remote work (Windows 10 operating system, I5-1135G7 processor, 8 GB - 16 GB RAM, 240 GB SSD storage)





Stand with **KYIV** ua

PEDIATRIC RECOVERY



Health and recreation program for children

Stand with
KYIV UA

GOAL

Improving children's health, psychological recovery, and preventing child neglect. Creating conditions for the continuation of the educational process and the development of physical and creative abilities

REQUIREMENT

Opportunity to organize rest and recreation for talented children, children of preferential categories and children of military servants in children's sanatoriums and camps lasting 4-21 days





Stand with
KYIV ua

PUBLIC SAFETY



TERRITORIAL AUTOMATED CIVIL NOTIFICATION SYSTEM

Stand with
KYIV UA

GOAL

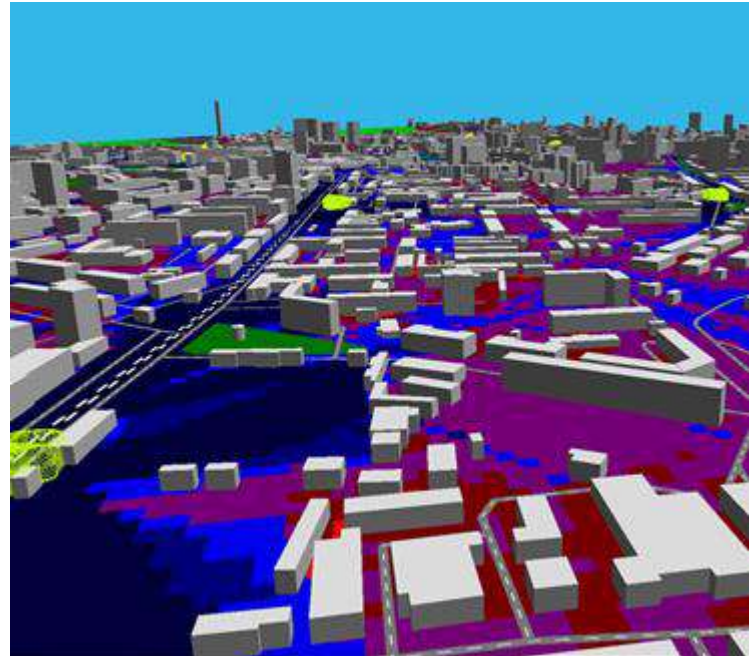
Timely notification of citizens in case of threats or emergency situations (individually for each place and at a specified time)

DONE

- During 2021 - 2022, project documentation was developed and 27 warning points were put into experimental and industrial operation.

Requirement

Set 600 alert points





TERRITORIAL AUTOMATED CIVIL NOTIFICATION SYSTEM

Stand with
KYIV UA

Characteristics

- Ability to work during a blackout (30 days from autonomous power without recharging);
- The possibility of rapid recharging up to 80% capacity within an hour;
- Transmission of addressed messages in the absence of a cellular network;
- "Hot" reservation of 100% of electronic units;
- The block-modular construction principle from the chassis;
- The operating temperature range is - 30 plus 50 degrees. with air humidity of 100%;
- The number of battery charge-discharge cycles is at least 10,000 cycles;
- Multi-level diagnostic and monitoring system (for each chassis unit)





Stand with **KYIV** ^{ua}

MUNICIPAL TECHNIQUE



ROLLING STOCK RENEWAL

Stand with
KYIV UA

GOAL

Renewal of vehicles for socially important passenger transportation, including people with disabilities

DONE

- A contract was signed for the manufacture and delivery of 20 tramcars with a 100% low floor level K1TZ06
- Delivery of tramcars is expected by the end of 2023
- Delivery of 12 trams has been completed

REQUIREMENT

Acquisition of new vehicles for passenger transportation and development of barrier-free space for people with limited mobility in accordance with national and international standards





ROLLING STOCK RENEWAL

Stand with
KYIV UA

VEHICLES REQUIREMENTS

№	Title	Quantity
1	<p>Acquisition of tramcars</p> <p>Technical specification: Length: above 26 000 mm Width: nominal 2 500 mm Height: max. 3,500 mm (3,700 mm with current collector in folded position) Minimum curve radius: 20m on the main line (maximum speed 10km/h) Minimum standard curve radius: 18 m at the depot Wheelbase: 1,850 - 1,900 mm Expected total number of passengers: 260 ($\pm 10\%$) 8 pass/ m² (AW4 load) The passenger compartment area for standing passengers must be 100% low. A manually operated ramp must be provided in the area of the second door to provide access for passengers in wheelchairs. The ramp must be able to withstand a load of at least 300 kg. The design and installation shall comply with UN ECE Regulation No. 107; Internal noise levels must comply with the following indicators: •Maximum 80 dB(A) inside the passenger compartment at maximum speed •Maximum 62 dB(A) inside the passenger compartment at 0 km/h •Maximum 77 dB(A) inside the driver's cabin at maximum speed The maximum design speed is set: 75 km/h. Travel speed for commercial transportation: not less than 70 km/h</p>	200
2	<p>Acquisition of trolleybuses</p> <p>Technical specification: Length: not less than 11,9 m Width: no more than 2550 mm (excluding the width of the mirrors) Height: maximum 3,800 mm (DSTU 4905) Number of seats and maximum passenger capacity - according to UNECE Regulation No. 107-03. Internal noise during acceleration of the trolleybus without load to a speed of 55 km/h is not more than : – 78 dBA, in the passenger compartment at a height of (1.2 0.1) m above the trolleybus axles (DSTU 4905); – 75 dBA in the driver's compartment at a height of (1.2 0.1) m above the floor level, provided that noise sources are turned on, doors and ventilation openings are closed (DSTU 4905) The passenger compartment area intended for standing passengers must be 100% low.</p>	200
3	<p>Acquisition of buses</p> <p>Technical specification: Length, vehicle on two axles, one section: 12m (± 250mm); Width: 2.50 m (+ 50 mm), excluding rear view mirrors Height: maximum 3.5 m; Minimum curve radius: maximum 12.50 m and an inner circle with a radius of 5.30 m. Expected total number of passengers in accordance with Directive 1230/2012): 105 ($\pm 5\%$) passengers (8 pass/m²). The internal noise shall not exceed 75 dB(A) when measured over the entire bus traveling at 50 km/h on an asphalt road, following the measurement method of DIN ISO 51128 дотримуючись методу вимірювання DIN ISO 51128</p>	300



MUNICIPAL TECHNIQUE FOR ROAD MAINTENANCE AND LANDSCAPING

Stand with
KYIV ua

GOAL

Renewal and replenishment of the rolling stock of machinery and equipment of municipal enterprises of Kyivavtodor, Kyivzenlenbud, and Pleso

DONE

- 86 units of rolling stock were transferred to the Armed Forces of Ukraine
- Systematic work is carried out to ensure the vital functions of Kyiv's balance sheet facilities, and assistance is provided to other regions of Ukraine
- Work is constantly being done to ensure proper maintenance of green areas and water bodies in the capital

REQUIREMENT

Providing Kyiv municipal enterprises with the necessary technique and equipment





MUNICIPAL TECHNIQUE FOR ROAD MAINTENANCE AND LANDSCAPING

Stand with
KYIV ua

VEHICLES REQUIREMENTS

№	Title	Quantity
1	BACKHOE LOADER JCB 3CX, 4CX or analogue	13
2	SPECIALIZED DUMP TRUCK with a carrying capacity 5-10t based on MAN, FORD, IVECO	16
3	TRACTOR 80 horsepower FARMER, LOVOL or analogue	26
4	TRACTOR 100 horsepower FARMER, LOVOL or analogue	24
5	AUTO HYDRAULIC CAR LIFT SOCAGE 22-32 m based on IVECO, ISUZU, or analogue	12
6	WATER-WASHING VEHICLE 6-8 m3, IVECO, MAN or analogue	13
7	MULTIFUNCTIONAL LOADER MULTIONE or analogue	13
8	VACUUM MACHINE 9 m3 based on MAN, IVECO, VOLVO or analogue	1
9	або аналог CARGO-PASSENGER VEHICLE OPEL, RENAULT or analogue	19
10	DUMP TRUCK WITH A MANIPULATOR 5-10t based on MAN, IVECO or analogue	7
11	GARBAGE TRUCK 8-11 m3 based on MAN, VOLVO or analogue	6
12	SELF-PROPELLED LAWN MOWER HUSQVARNA, STIHL or analogue	22
13	TRACTOR ATTACHMENTS AND TRAILED EQUIPMENT (tree transplanter, stump grinder, branch shredder, stump cutter, mower)	
14	EMERGENCY RESCUE VEHICLE HAVAL or analogue	2
15	VAN RENAULT EXPRESS or analogue	2

№	Title	Quantity
16	BACKHOE LOADER completed with hydraulic hammer, cutter, snow blade and rotary brush without hopper type JCB 3CX or analogue	12
17	SPECIALIZED DUMP TRUCK with a wheel formula 4x2, with a carrying capacity 10t MAN, FORD, IVECO or analogue with sand and salt spreading and snow removal equipment	24
18	GARBAGE TRUCK with bunker capacity 10 m3 based on MAN, FORD or analogue	12
19	CARGO-PASSENGER VEHICLE «Road service» on the chassis FORD Transit, Hyundai H1 or analogue	24
20	PATCHING MACHINE of type CRAFCO MAGNUM or analogue	12
21	SNOW BLOWER based on a wheeled tractor 4x4, потужністю 100-110 horsepower is analogue of YTOELX1054 with snow blade, sweeping brush and hopper for sand and salt mixture	12
22	TRUCK with on-board carrying capacity 10 t with a crane manipulator 8-10 t with a wheel formula 4x2, car chassis IVECO EuroCargo or analogue	12



Stand with ^{ua}
KYIV

**DEPARTMENT
OF ECONOMICS AND
INVESTMENTS**

+38 067 982 66 02

+38 099 385 05 90

supportkyiv@kyivcity.gov.ua